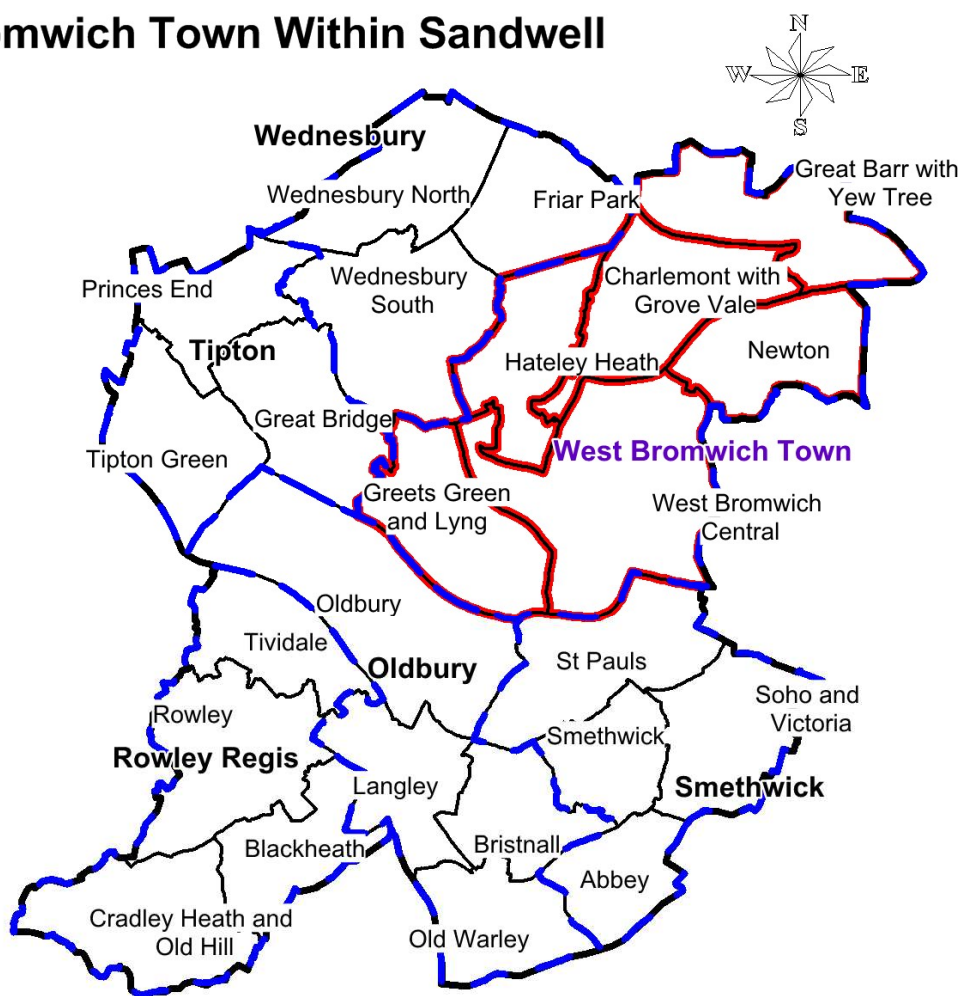


West Bromwich Town Profile

Data isn't always available for West Bromwich as a town and so data for the most relevant geography will be provided. Some datasets are only available for the Westminster Parliamentary constituencies and West Bromwich town is in the West Bromwich East constituency (as shown on map on Page 4).

West Bromwich is one of six towns in Sandwell which all contain several wards. West Bromwich is in the south of Sandwell and contains the wards of Charlemont with Grove Vale, Great Barr with Yew Tree, Greets Green and Lyng, Hateley Heath, Newton and West Bromwich Central and borders Walsall to the North and Birmingham to the West:-

West Bromwich Town Within Sandwell



Key

- | | | | |
|---|----------------|---|-----------------------------|
|  | Sandwell |  | Wards |
|  | Sandwell Towns |  | Wards In West Bromwich Town |

© Crown copyright and database rights 2018
Ordnance Survey Licence No 100032119

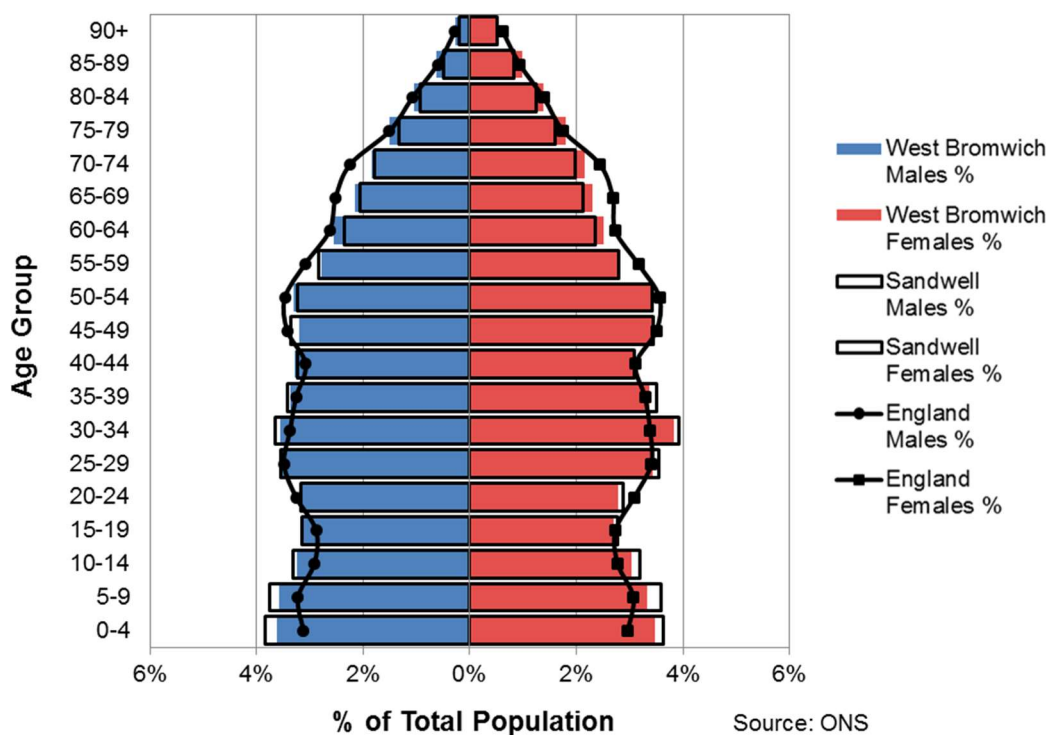
Sandwell MBC, Public Health Directorate.



Demographics

Age and Sex

**Population of West Bromwich Town
by Age and Sex, 2017**



West Bromwich has a proportionally older age profile (a lower proportion of people in the fewer than 44 age bands for both males and females) than Sandwell, but a younger age profile than England.

Ethnicity

Area	White	Mixed/ multiple ethnic groups	Asian/ Asian British	Black/ African/ Caribbean/ Black British	Other Ethnic Group
West Bromwich	64.5%	3.4%	23.2%	6.9%	2.0%
Sandwell	69.9%	3.3%	19.2%	6.0%	1.6%
England	85.4%	2.3%	7.8%	3.5%	1.0%

Source: ONS 2011 Census Data

- 35.5% of West Bromwich's population are from ethnic minorities. This is higher than both Sandwell (30.1%) and England (14.6%).

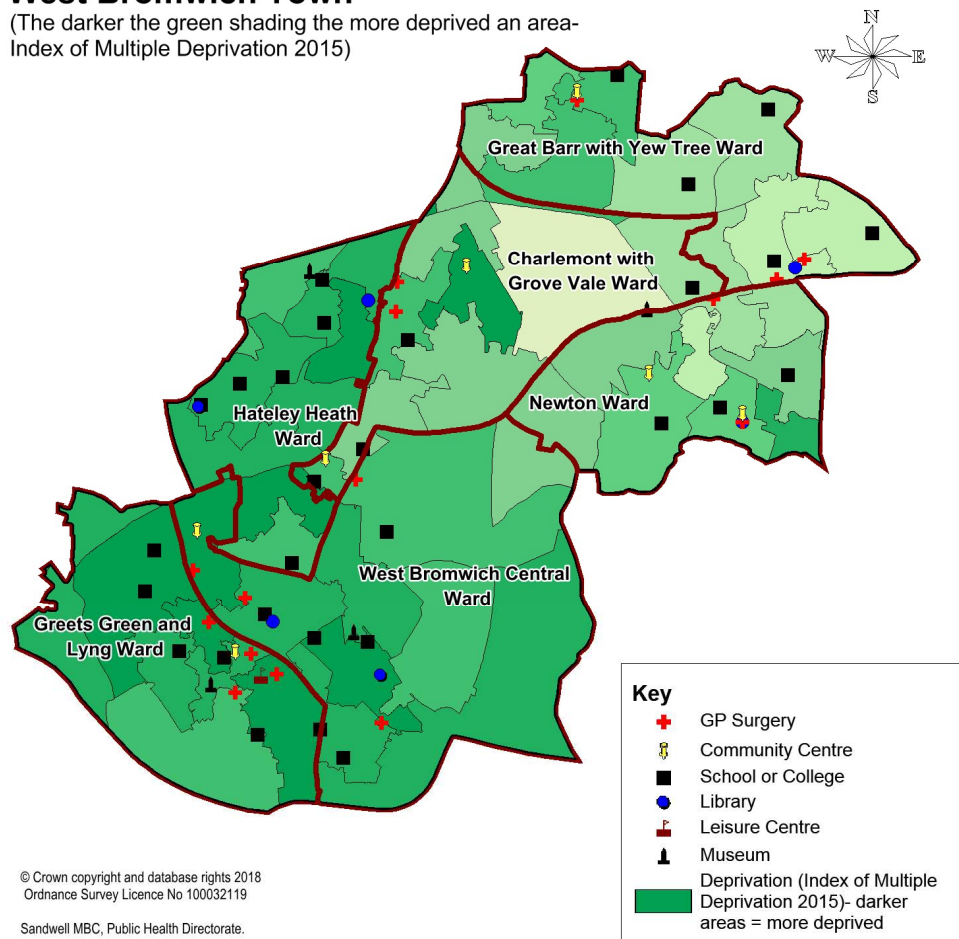


Deprivation- 2015

West Bromwich Town Map, showing the six wards, deprivation and some key facilities

West Bromwich Town

(The darker the green shading the more deprived an area- Index of Multiple Deprivation 2015)



© Crown copyright and database rights 2018
Ordnance Survey Licence No 100032119
Sandwell MBC, Public Health Directorate.

Source: The English Indices of Deprivation 2015, Department for Communities and Local Government

Deprivation-

In England, the lower layer super output areas (LSOA*) are ranked into 10 deciles for Deprivation.

- Two thirds of the LSOAs in West Bromwich are in the 40% most deprived LSOA in England (Sandwell- 78.5%)
- 91.1% of the LSOAs in West Bromwich are in the 60% most deprived LSOA in England (Sandwell- 93.5%)
- All of the LSOAs of West Bromwich are in the 80% most deprived LSOA in England.

West Bromwich's Income Deprivation Affecting Children Index (IDACI) and Income Deprivation Affecting Older People Index (IDAOPI) Scores are in the 30% most deprived areas in England.

Overall West Bromwich is more deprived than England and Sandwell and its deprivation score would put it in the 30% most deprived areas in England.

*LSOA are areas with between 1,000 and 3,000 people



Inclusive Growth

Inclusive Growth (economic growth that benefits everyone) is a key theme for Sandwell Council and the West Midlands Combined Authority. Inclusive Growth indicators are grouped into two themes which both have three dimensions. Picking one indicator for each dimension:-

Theme	Dimension	Broad Indicator	Measure	Year	Smallest Geography Data Available	Sandwell	West Midlands Region	England
Economic Inclusion	Income	Low Earnings	20th percentile of gross weekly earnings (Twenty per cent of full-time workers receive earnings equal to or below this threshold)	2017	£337.00 (West Bromwich East)	£335.30	£356.70	£375.00
	Living Costs	Fuel Poverty	% of households classed as being 'fuel poor' (using Low Income-High Costs model)	2016	15.9% (West Bromwich Town)	16.9%	13.7%	11.1%
	Labour Market Inclusion	Unemployment	% of working age population not in employment but actively seeking and available to start work	2017	8.6% (West Bromwich East)	8.4%	5.4%	4.5%
Prosperity	Output Growth	Wages/Earnings	Median gross weekly pay for full-time workers	2017	£478.80 (West Bromwich East)	£461.50	£517.40	£555.80
	Employment	People in employment	% of working age population in employment (employment rate)	2017	63.2% (West Bromwich East)	64.3%	72.4%	75.1%
	Human Capital	Intermediate & higher level skills	% working age population qualified at NVQ Level 2 and above	2017	51.6% (West Bromwich East)	53.4%	69.3%	74.6%

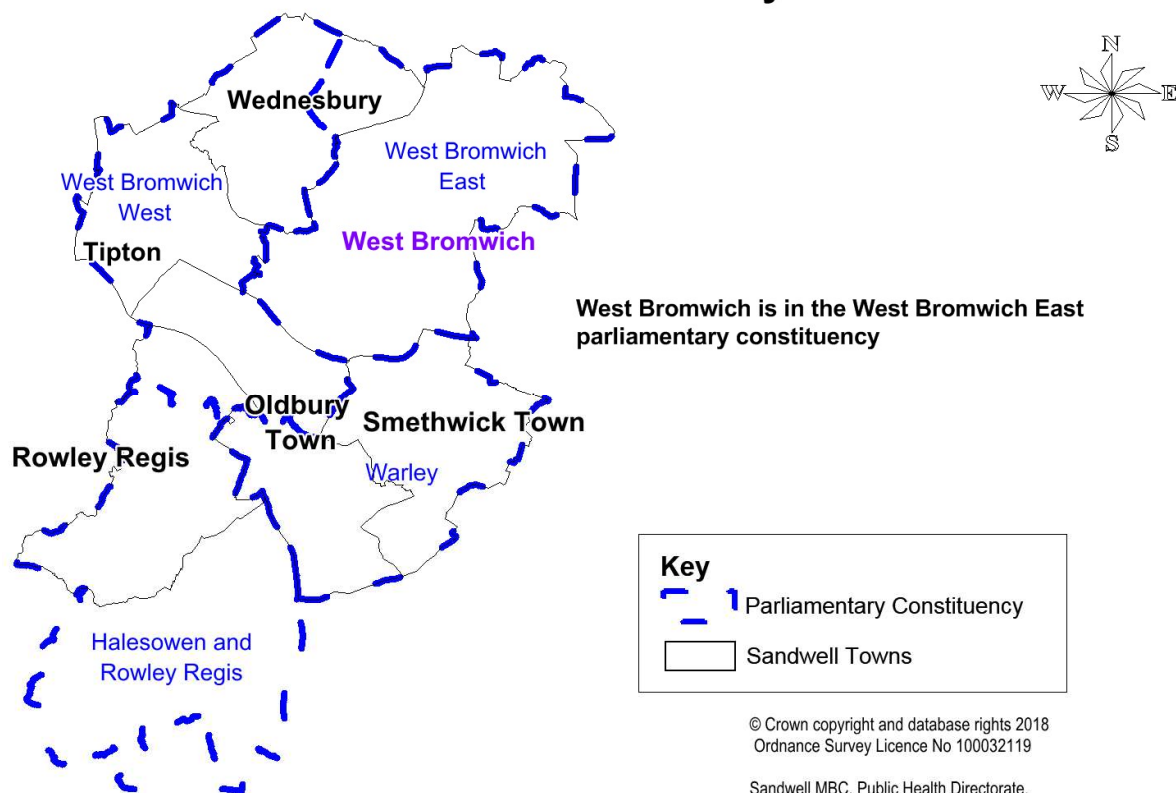
Source: ONS and BEIS- based on the work of the Inclusive Growth Analysis Unit

In the latest data available (2016 or 2017) at the best fit geography to West Bromwich town:-

- Three indicators are positively different to Sandwell
- Three indicators are negatively different to Sandwell

As shown on the map below West Bromwich is in the West Bromwich East Westminster parliamentary constituency which also contains a small part of Wednesbury town.

West Bromwich Town & Parliamentary Constituencies



Child Development at Age 5

Percentage of pupils achieving a good level of development at age 5, 2017/18

West Bromwich (67%), Sandwell (66%) and England (72%)

Key Stage 4 Outcomes

Attainment 8 (Attainment 8 measures pupils' attainment across 8 qualifications as described here:-

https://assets.publishing.service.gov.uk/government/uploads/system/uploads/attachment_data/file/783865/Secondary_accountability_measures_guidance.pdf)

West Bromwich (40.5), Sandwell (40.6) and England (46.5)

Progress 8 (Measure of the progress children make between the end of primary school and the end of secondary school)

West Bromwich (-0.30), Sandwell (-0.31) and England (-0.02)

Source: Child Development at 5 and Key Stage 4 from Sandwell Council/Department for Education

Life Expectancy and Healthy Life Expectancy

At Birth by 2011 Census wards - 2009 to 2013

Ward	Life Expectancy (Years)		Healthy Life Expectancy (Years)		Proportion of life spent in "Good" health	
	Male	Female	Male	Female	Male	Female
Charlemont with Grove Vale	77.9	84.2	61.5	63.8	79.0%	75.8%
Great Barr with Yew Tree	81.7	83.0	63.4	62.1	77.5%	74.8%
Greets Green and Lyng	75.5	80.9	54.8	55.3	72.6%	68.3%
Hateley Heath	76.2	80.4	55.9	56.9	73.4%	70.9%
Newton	79.0	85.9	61.9	63.8	78.3%	74.3%
West Bromwich Central	76.5	80.5	56.3	56.2	73.6%	69.8%
England	79.1	83.0	63.5	64.8	80.2%	78.1%

Source: ONS

Data in Red Indicates the ward is significantly lower than England, Data in Green Indicates the ward is significantly higher than England & Proportion of life spent in 'Good' health= Healthy Life Expectancy/ Life Expectancy

Within the six wards life expectancy (LE) and healthy life expectancy (HLE) varies but:-

- HLE was significantly lower than England in all six wards for both genders except Males in Great Barr with Yew Tree and Females in Newton where it was closer to the England estimate
- LE is significantly lower than England for both genders in Greets Green and Lyng, Hateley Heath and West Bromwich Central wards
- LE is significantly higher than England in the Charlemont with Grove Vale and Newton wards for Females and the Great Barr with Yew Tree for Males
- LE is closer to the England estimate than England in the Charlemont with Grove Vale and Newton wards for Males and the Great Barr with Yew Tree for Females



Health and Wider Indicators

The spine chart below shows indicators for West Bromwich compared to Sandwell and England.

Red dots – West Bromwich significantly worse than England, Yellow dots - West Bromwich not any different to England & Green dots – West Bromwich significantly better than England

Indicator ID	Indicators	Time Period	West Bromwich Town Statistic	Sandwell Statistic	England Statistic	Summary chart
Theme 1: Our Community						
LH10013	Low Birth Weight of term babies (%)	2011-2015	4.2	4.1	2.8	
LH10014	Child Poverty - English Indices of Deprivation 2015 (%)	2015	28	29.9	19.9	
LH10021	Limiting long term illness or disability (%)	2011	21.1	20.9	17.6	
LH10025	Provision of 50 hours or more unpaid care per week (%)	2011	3.1	3.2	2.4	
LH10026	Pensioners living alone (%)	2011	32.6	33.3	31.5	
Theme 2 : Behavioural Risk Factors and Child Health						
LH20020	Emergency admissions in under 5s (Crude rate per 1000)	2013/14-2015/16	204.2	208.6	149.2	
LH20021	A&E attendances in under 5s (Crude rate per 1000)	2013/14-2015/16	615.1	579.1	551.6	
LH20022	Obese adults (%)	2006-2008	28.8	28.7	24.1	
LH20001	Obese Children (Reception Year) (%)	2013/14-2015/16	11.7	11.4	9.3	
LH20002	Children with excess weight (Reception Year) (%)	2013/14-2015/16	21.9	22.7	22.2	
LH20003	Obese Children (Year 6) (%)	2013/14-2015/16	25.1	25.5	19.3	
LH20004	Children with excess weight (Year 6) (%)	2013/14-2015/16	39.5	40.6	33.6	
LH20018	Deliveries to teenage mothers (%)	2011/12-2015/16	1.7	1.9	1.1	
Theme 3 : Disease and Poor Health						
LH30001	Emergency hospital admissions for all causes (SAR)	2011/12-2015/16	120.7	127.3	100	
LH30003	Emergency hospital admissions for CHD (SAR)	2011/12-2015/16	104.3	107.8	100	
LH30005	Emergency hospital admissions for stroke (SAR)	2011/12-2015/16	92.6	99.6	100	
LH30006	Emergency hospital admissions for Myocardial Infarction (heart attack) (SAR)	2011/12-2015/16	104.4	109.5	100	
LH30007	Emergency hospital admissions for Chronic Obstructive Pulmonary Disease (COPD) (SAR)	2011/12-2015/16	128.5	155	100	
LH30013	Hospital stays for self harm (SAR)	2011/12-2015/16	117.1	116.3	100	
LH30014	Hospital stays for alcohol related harm (SAR)	2011/12-2015/16	116	123.2	100	
LH30015	Emergency hospital admissions for hip fracture in 65+ (SAR)	2011/12-2015/16	107	112.4	100	
Theme 4 : Life Expectancy and Causes of Death						
LH40007	Deaths from all causes, all ages (SMR)	2011-2015	105.5	115.9	100	
LH40008	Deaths from all causes, under 65 years (SMR)	2011-2015	121.5	127.7	100	
LH40009	Deaths from all causes, under 75 years (SMR)	2011-2015	118	127.7	100	
LH40010	Deaths from all cancer, all ages (SMR)	2011-2015	100.4	112.5	100	
LH40011	Deaths from all cancer, under 75 years (SMR)	2011-2015	109	117.4	100	
LH40012	Deaths from circulatory disease, all ages (SMR)	2011-2015	104.1	115.6	100	
LH40013	Deaths from circulatory disease, under 75 years (SMR)	2011-2015	125.5	136.3	100	
LH40014	Deaths from coronary heart disease, all ages (SMR)	2011-2015	116.5	121.6	100	
LH40015	Deaths from coronary heart disease, under 75 years (SMR)	2011-2015	141.8	147.8	100	
LH40016	Deaths from stroke, all ages (SMR)	2011-2015	84	106.6	100	
LH40017	Deaths from respiratory diseases, all ages (SMR)	2011-2015	105.4	118.4	100	

● significantly worse ● significantly better ● not significantly different from average

Source: www.localhealth.org.uk the spreadsheet in the following link explains each indicator: - <http://www.localhealth.org.uk/assets/Spreadsheets/Local%20Health%20Metadata%20File%20Nov%202017.xlsx> - listed by Indicator ID- Crown Copyright-Sources include ONS and PHE.

On the above Spine Charts:-

- The light grey is the range of values in England at that geography
- The dark grey is the range of values in the middle 50% of values in England at that geography. Any values outside of this area are in the lowest or highest 25% of values.
- The figure for England is shown by the vertical black line
- The coloured dot shows where this geography is within England and the colours indicate significance compared to England (as described above and below the spine chart)
- Standardised Admission Ratio (SAR)/ Standardised Mortality Ratio (SMR) - Standardisation compares actual figures with expected figures if they followed the structure of that population e.g. age and gender.
- SAR/SMR Interpretation: - Figures over 100 are higher than expected and less than 100 are lower than expected. England is 100 because the England population structure is used in this data.

